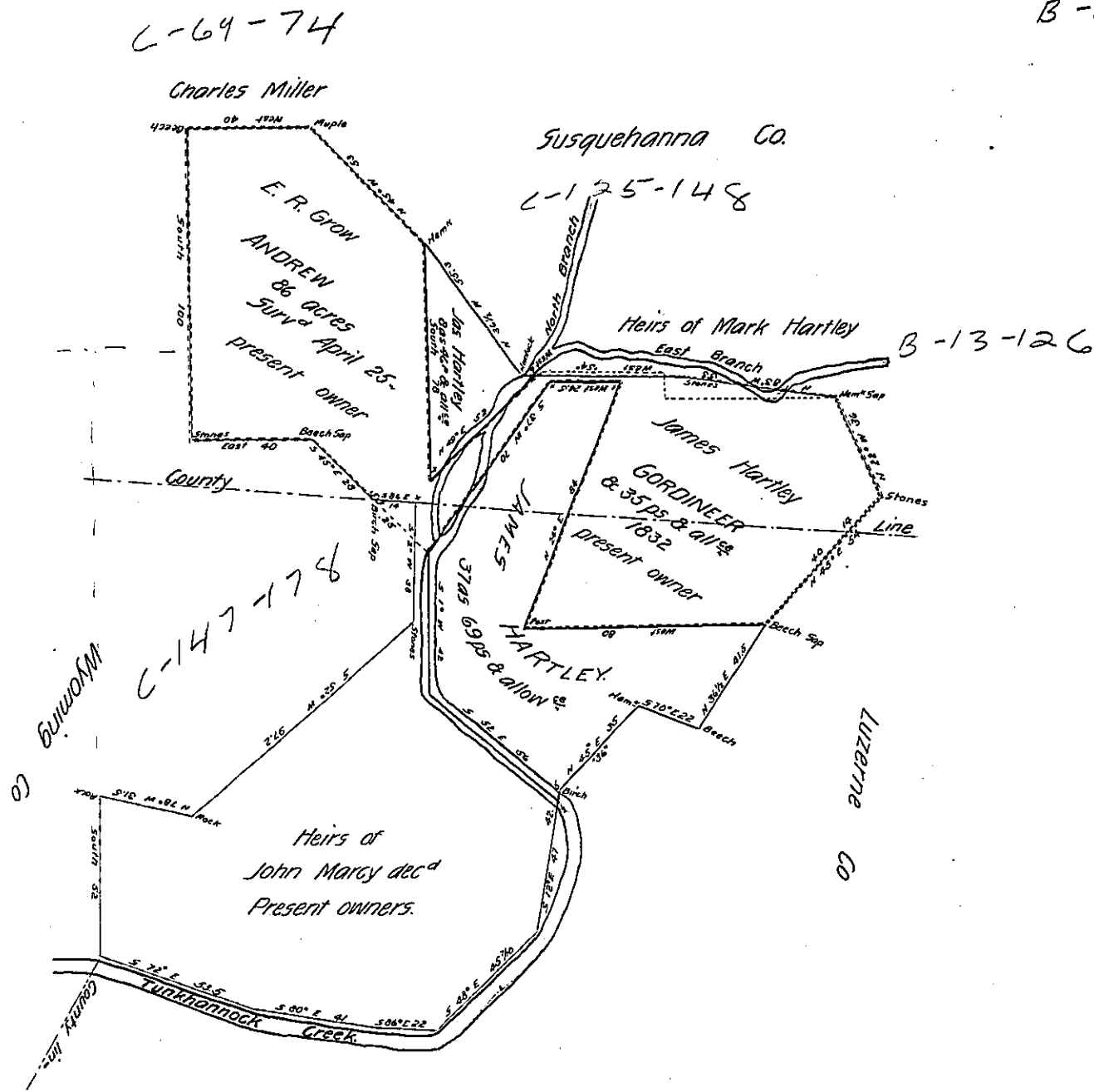


ALSO
B-20-77



37-69
46
173

The black lines in the above represent two pieces of land situate in Lenox township in the County of Susquehanna & Benton township (formerly Nicholson) Luzerne county containing together forty five $\frac{45}{100}$ acres and allowance of 6 per cent for Roads &c. made for James Hartley at his request the 20th day of January A.D. 1870. being parts of a larger tract of 204 acres & 144 perches & allowance; originally surveyed in pursuance of a Warrant granted to John Marcy dated the 9th of July A.D. 1832.

James W. Chapman C.S.

To Jacob M. Campbell Sur. Gen^l
P.S. The lines dotted in black in the northern part represent the survey on the Gordineer Warrant which is now owned by Hartley & Grow.

IN TESTIMONY that the above is a copy of the original remaining on file in the Department of Internal Affairs of Pennsylvania, made conformably to an Act of Assembly approved the 16th day of February, 1833, I have hereunto set my Hand and caused the Seal of said Department to be affixed at Harrisburg, this

twelfth day of June 1906.

Edward P. ...
Secretary of Internal Affairs.